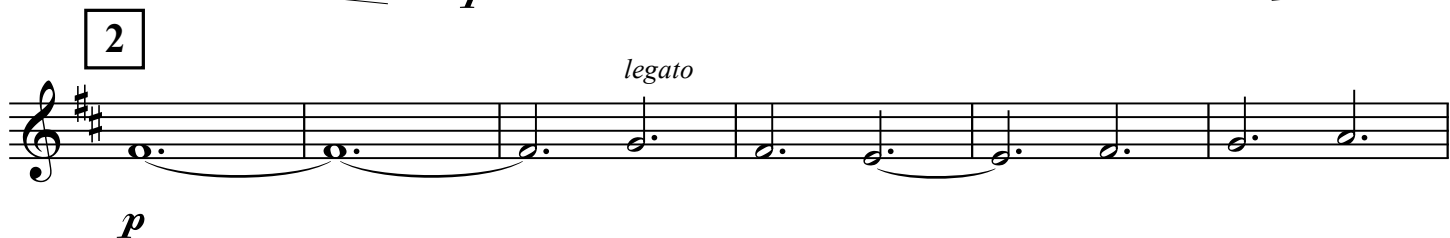
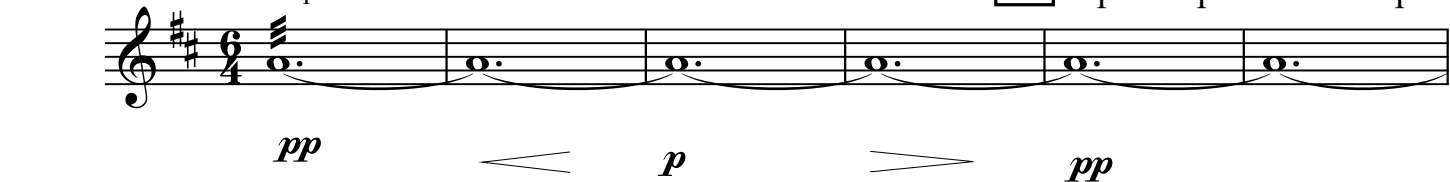


РУССКАЯ НАРОДНАЯ ПЕСНЯ СТЕПЬ ДА СТЕПЬ КРУГОМ

Lento $\text{♩} = 72$
sul pont.

1 Аранжировка Е. Петрова



38

Staff 38-40: Treble clef, key of D major. Measures 38-40 feature a series of eighth notes with upward accents. Dynamics include *sf* (fortissimo) and crescendo/decrescendo hairpins. A repeat sign is present at the end of measure 40.

40

Staff 40-45: Treble clef, key of D major. Measures 40-45 feature a series of eighth notes with upward accents. Dynamics include *ff* (fortissimo), *dim.* (diminuendo), *legato*, *rall.* (rallentando), and *p* (piano). A box containing the number 5 is present. A tempo change is indicated: **Meno mosso** (♩ = 88).

45

Staff 45-50: Treble clef, key of D major. Measures 45-50 feature a series of eighth notes with upward accents. Dynamics include *pp* (pianissimo). A tempo change is indicated: **rall. poco a poco**. A measure rest of 8 measures is indicated. The section ends with *sul pont.* (sul ponticello).